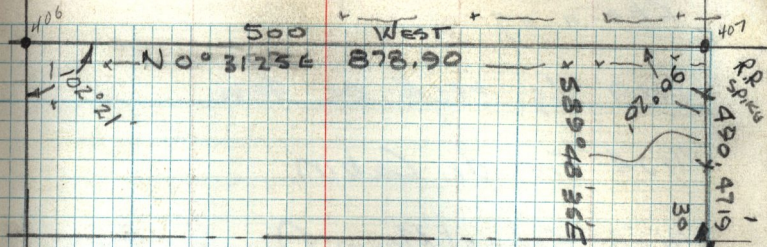


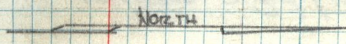
①
R.R. SPIKE
490.4719'



408
30
29
73.855

N 100.00'

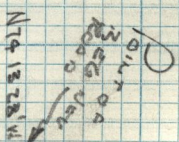
Closing course computed 6-20-72
2,774.90, 5 89° 40' 11" E



N 77° 07' 35.11" W
2084.20

$\Delta = 15^\circ 56' 17.77"$

405
MAIL
N 61° 51' 35.11" W
534.24
EUGENE 4.20



140.0

403
100 EAST E
922.26

402
785.77
N 8° 20' 32.11" E

N 15° 46' 32.11" E = 7° 17' 21"

127.01
404
13.00
R.R. SPIKE
MAIL

401
N 1/4 CORN
North 29.7111 W
R.C.S.S.